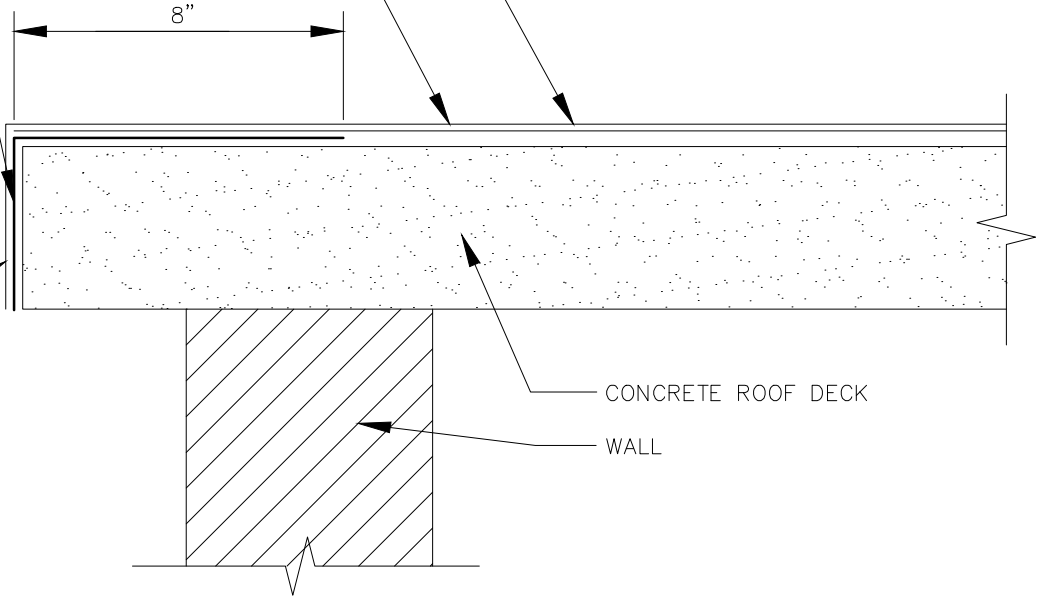


POLYGLASS ROOF COATING SYSTEM:
BASE COAT, 40" FABRIC, BASE COAT
AND SURFACE COAT

LAP POLYGLASS ROOF COATING
SYSTEM COMPONENTS FROM THE
ROOF FIELD OVER EDGE DETAIL

BASE COAT, 12"
FABRIC AND BASE
COAT COMPONENTS

COVER ENTIRE
EXPOSED EDGE



CONCRETE ROOF DECK

WALL

- SURFACE COAT

POLYBRITE 70 OR PG 700 ELASTOMERIC ROOF COATINGS. APPLY A MINIMUM OF 2 COATS.

- BASE COAT

POLYBRITE 70, POLYBRITE 76, OR PG 700 ELASTOMERIC ROOF COATINGS. APPLY A MINIMUM OF 2 COATS.

- FLASHING COMPOUND

POLYBRITE 72 FLASHING COMPOUND AS REQUIRED. APPLY AT 1/8" THICK AND USE WITH POLYESTER REINFORCEMENT.

- POLYESTER

POLYBRITE REINFORCING POLYESTER.

- SURFACE PREPARATION

IF OXIDATION IS PRESENT, GRINDING AFFECTED AREAS WITH WIRE BRUSH IS NECESSARY. THEN PRIME ENTIRE ROOF WITH POLYBRITE 74 RUST INHIBITOR PRIMER APPLIED AT THE RATE OF 18-24 WET MILS (150-180 SQUARE FEET PER GALLON).

CONCRETE ROOF DECK
EDGE DETAIL WITHOUT
METAL DRIP EDGE

NUMBER:

PG-RDE-011

DATE:

MARCH 2014



www.polyglass.com