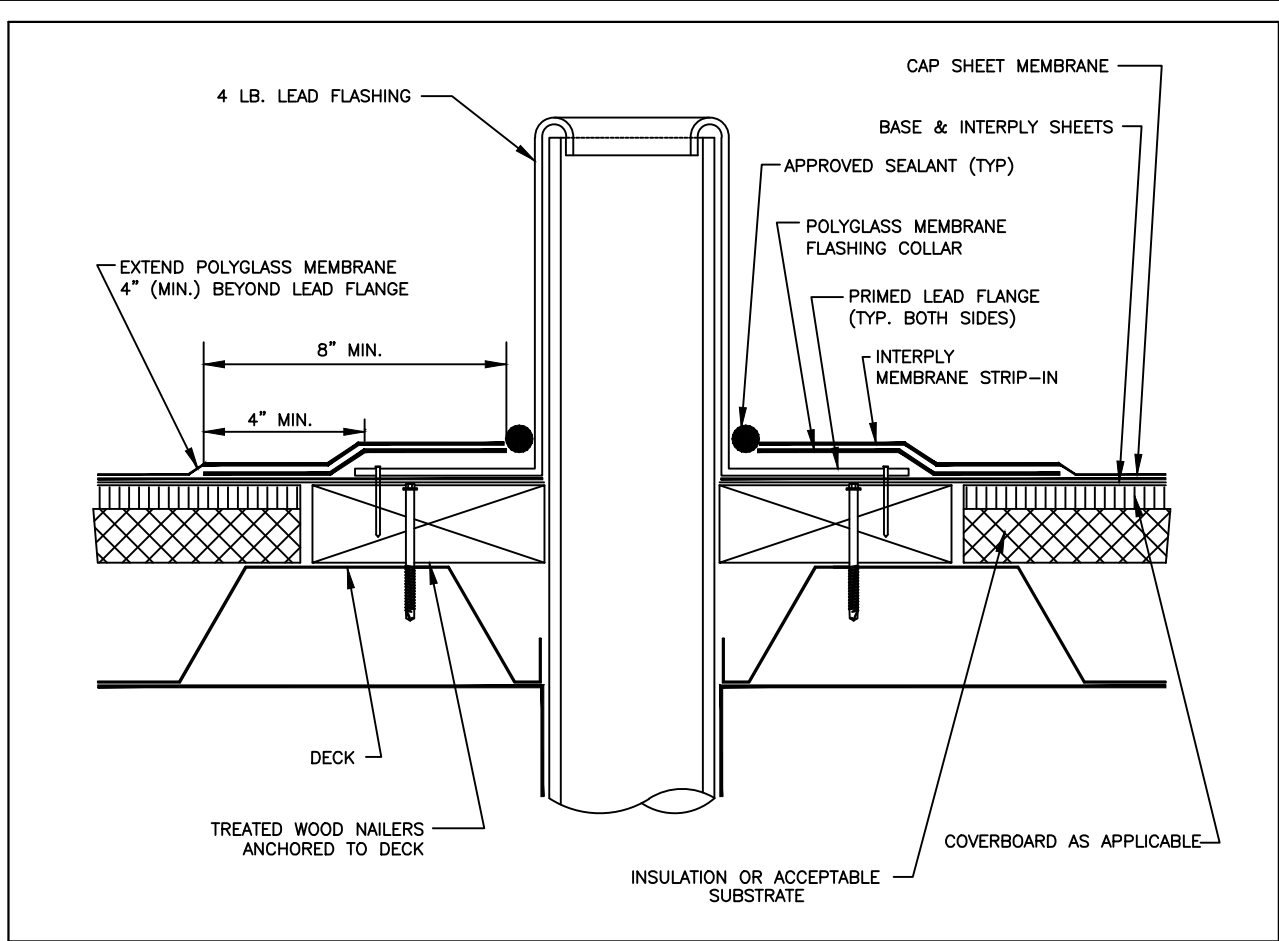


POLYGLASS ROOFING SYSTEM DETAIL



DETAIL KEYNOTES

- LEAD FLANGE MUST BE SET IN APPROVED FLASHING CEMENT. HEAT FUSED APPLICATIONS SHOULD SET IN SOFTENED MEMBRANE.
- LEAD FLASHING SHOULD CARRY OVER AND INTO VENT PIPE OPENING ONE INCH.

VENT PIPE
FLASHING WITH
LEAD SLEEVE

NUMBER:

PG-PEN-002

DATE:

NOVEMBER 2016



www.polyglass.com